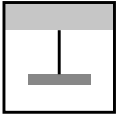
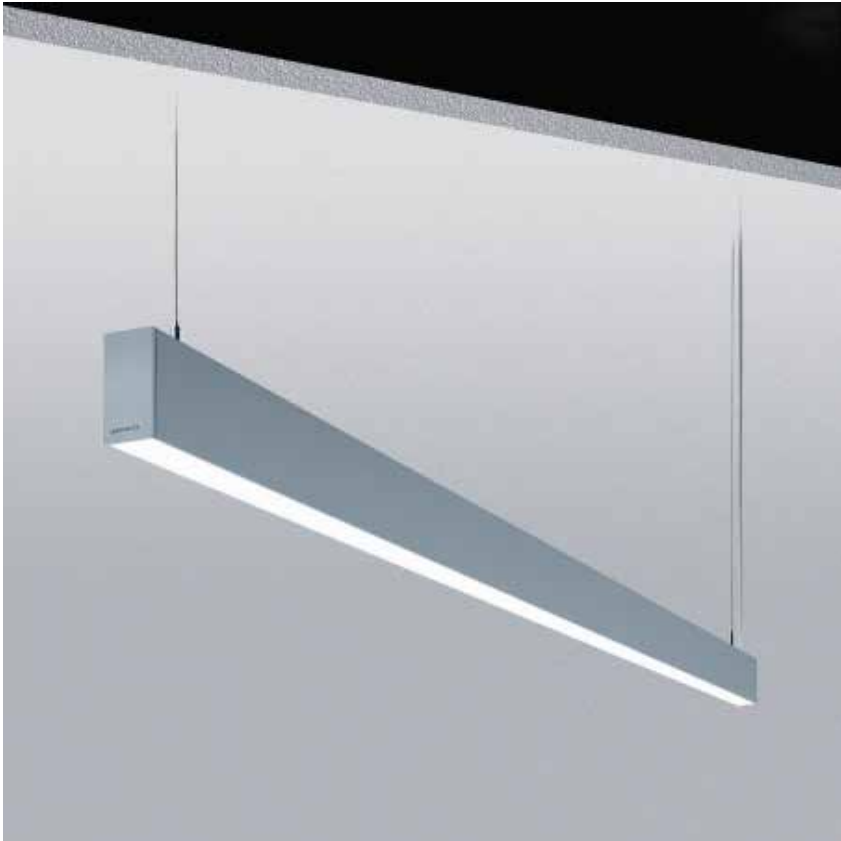
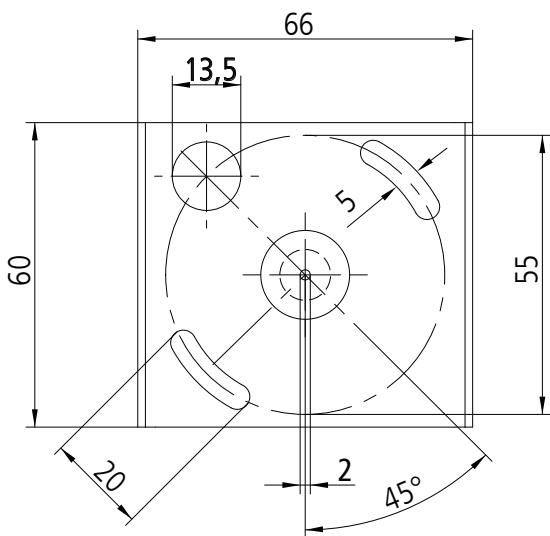
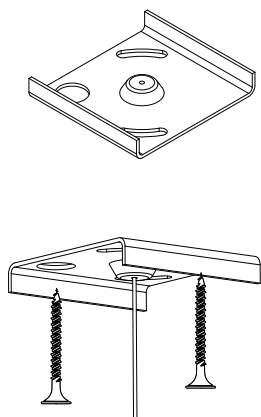
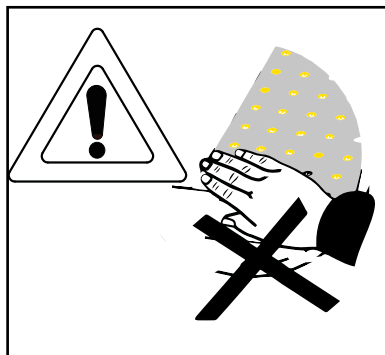
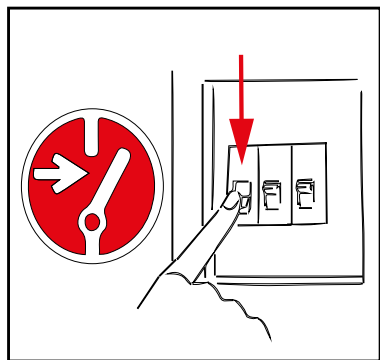


S55-SYSTEM

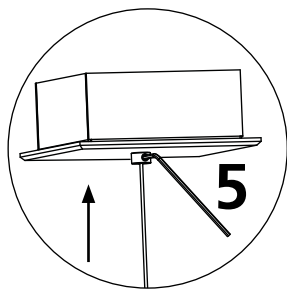
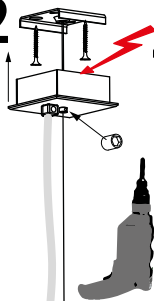


no hot plugging

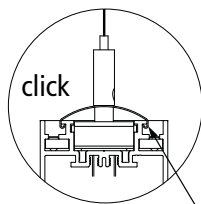
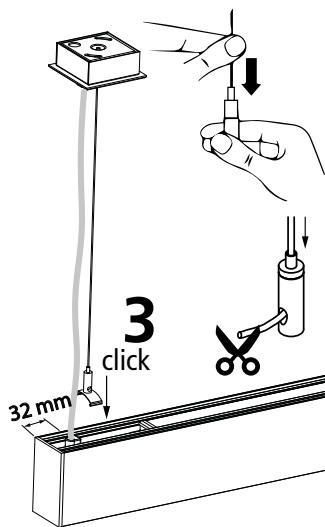
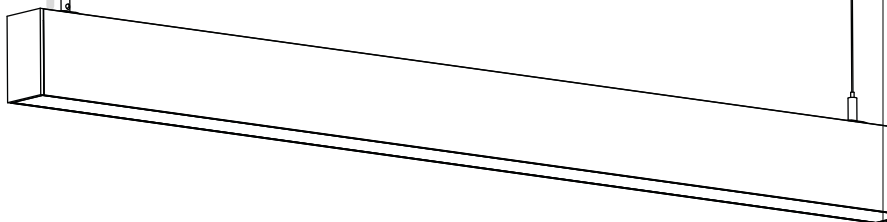
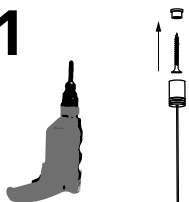




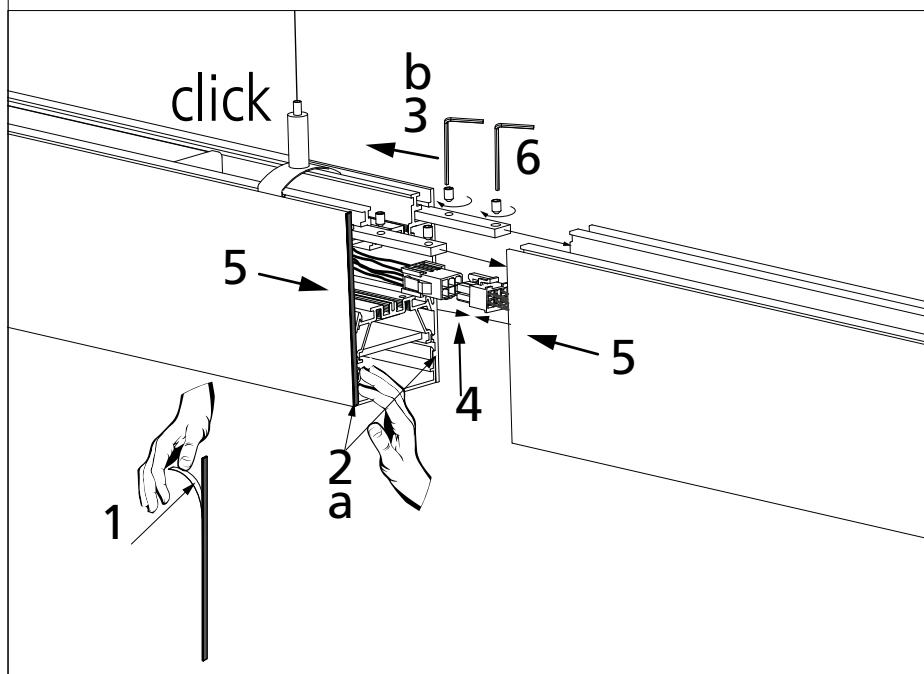
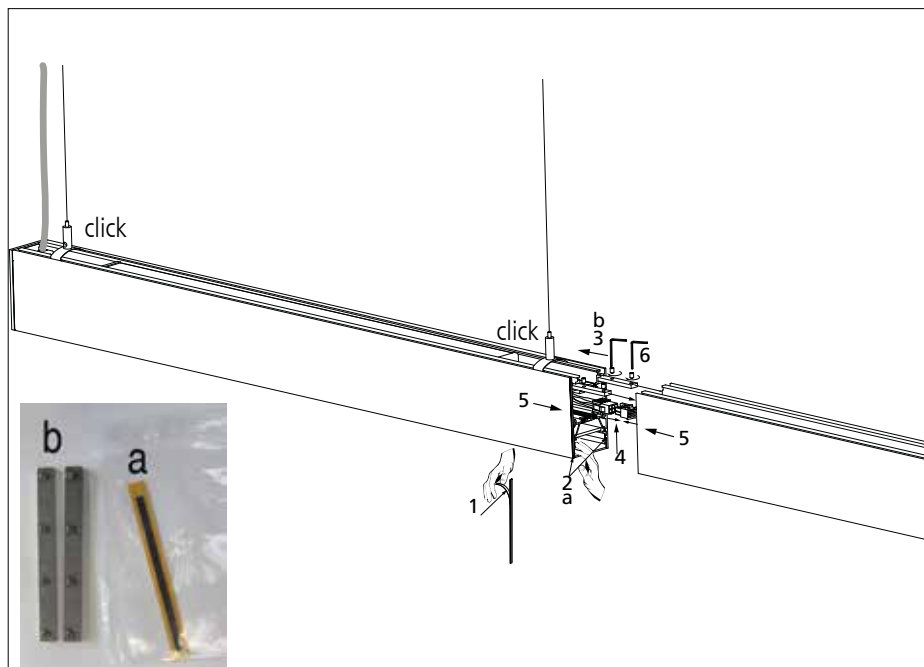
2 4

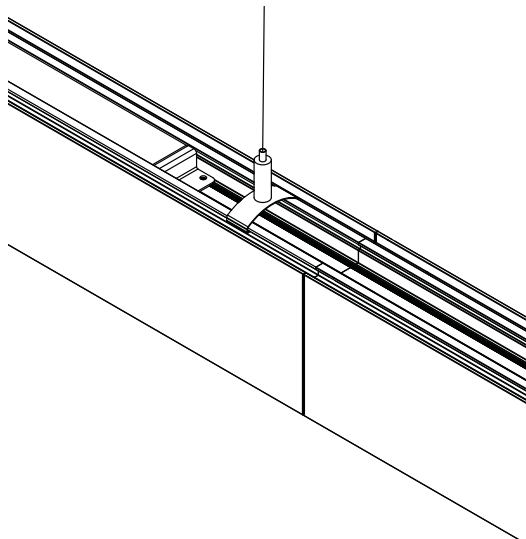


1



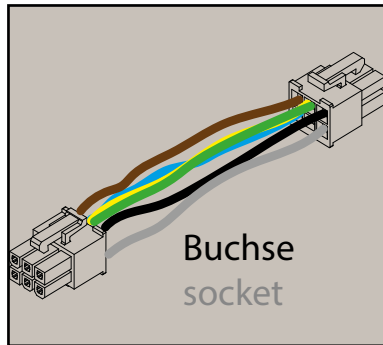
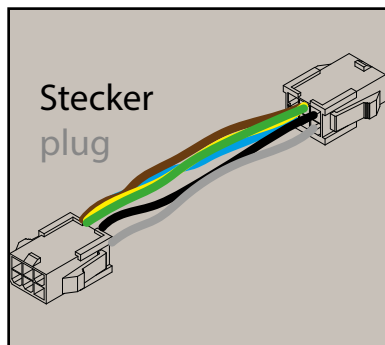
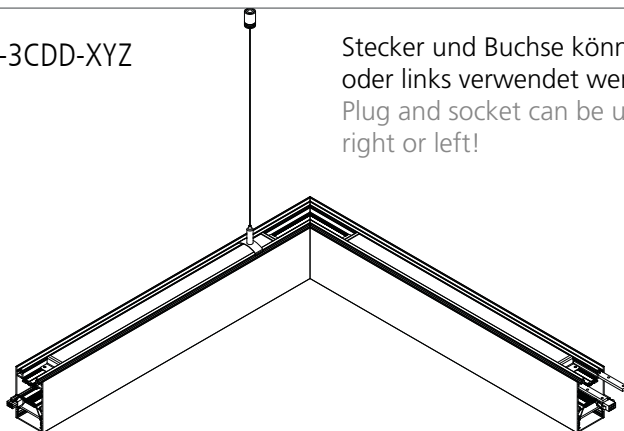
3



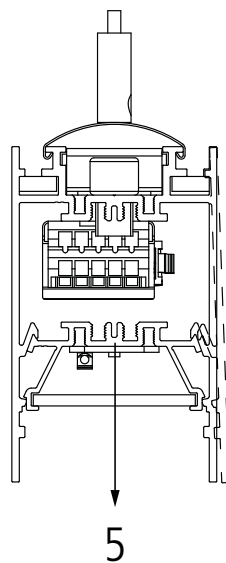
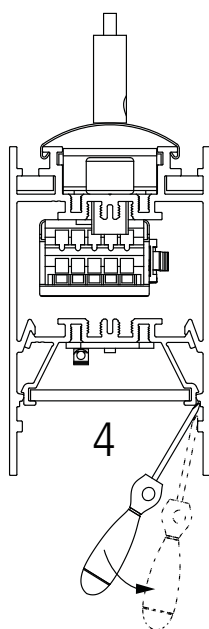
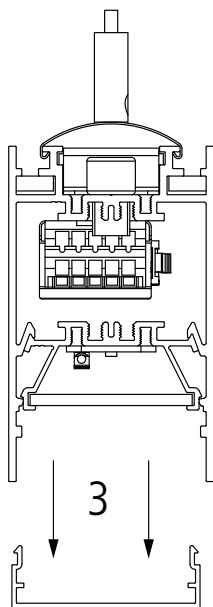
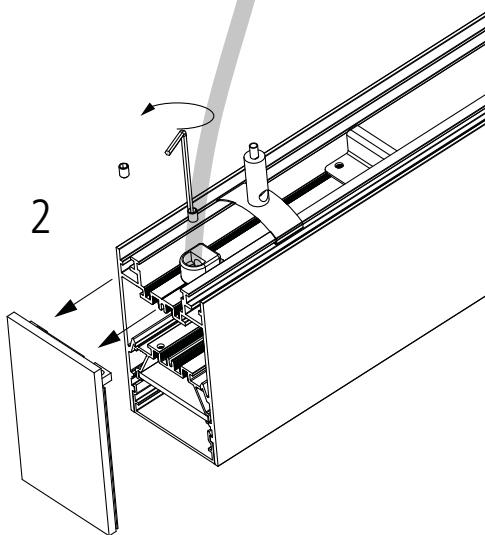
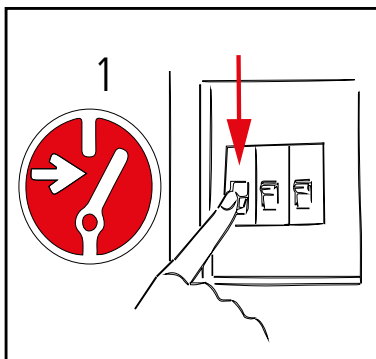


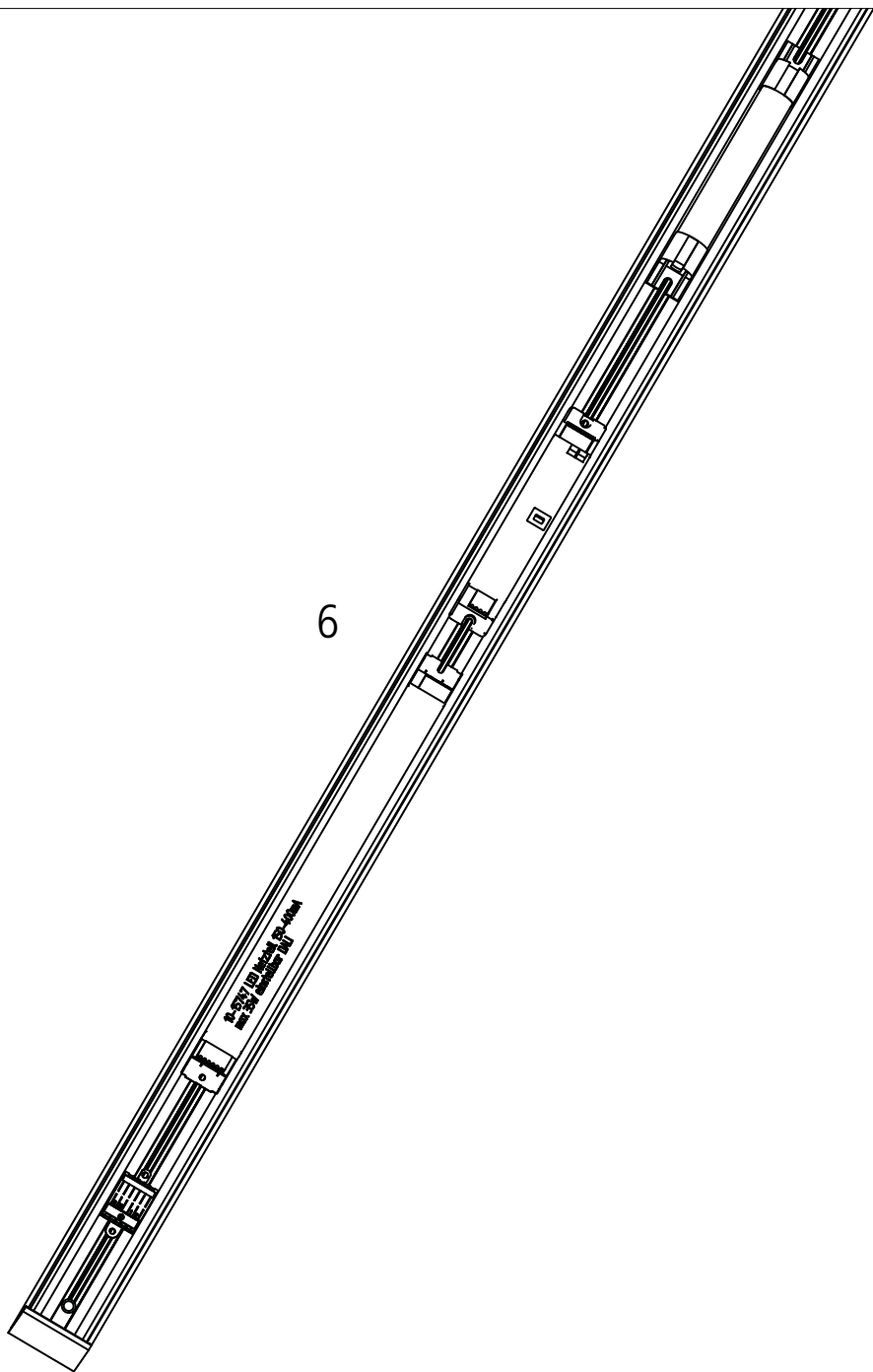
150-0600-3CDD-XYZ

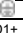
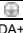
Stecker und Buchse können rechts
oder links verwendet werden!
Plug and socket can be used either
right or left!

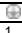


Demontage / dismantling







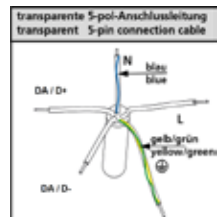
Klemme Terminal		DALI // 1-10V	Notlicht mit 1h/3h Batterie, schaltbar EM-light with 1h/3h battery, switched	Notlicht mit 1h/3h Batterie & DALI EM-light with 1h/3h battery & DALI
L	L	Netz / mains		Netz / mains & charging battery
N	N	Neutralleiter / neutral	Neutralleiter / neutral	Neutralleiter / neutral
		PE / ground	PE / ground	PE / ground
D1+	DA+	DALI - DIM // + Pol 1-10V	Netz / mains	DALI - DIM
D2 -	DA -	DALI - DIM // - Pol 1-10V	Netz geschaltet / switched supply	DALI - DIM

Klemme Terminal		Schaltbar switchable	2-fach schaltbar fold switchable	2-Notlicht mit 1h/3h Batterie, schaltbar EM-light with 1h/3h battery, switched
3		Netz geschaltet / switched supply	Netz geschaltet / switched supply	
N		Neutralleiter / neutral	Neutralleiter / neutral	Neutralleiter / neutral
		PE / ground	PE / ground	PE / ground
1				Netz / mains
2			Netz geschaltet / switched supply	Netz geschaltet / switched supply

Pendelleuchten / Pendant light

Klemme Terminal	Aderfarbe Wire colour	Schaltbar switchable	DALI // 1-10V	2-fach schaltbar fold switchable	2-
L	grau / grey	Netz geschaltet / switched supply	Netz / mains	Direkter Lichtanteil / direkt light	
N	blau / blue	Neutralleiter / neutral	Neutralleiter / neutral	Neutralleiter / neutral	
	grün/gelb yellow/green	PE / ground	PE / ground	PE / ground	
D+	DA schwarz / black		DALI - DIM // + Pol 1-10V		
D-	DA braun / brown		DALI - DIM // - Pol 1-10V	Indirekter Lichtanteil / indirekt light	

Klemme Terminal	Aderfarbe Wire colour	Notlicht mit 1h/3h Batterie, schaltbar EM-light with 1h/3h battery, switched	Notlicht mit 1h/3h Batterie & DALI EM-light with 1h/3h battery & DALI
L	grau / grey		Netz / mains & charging battery
N	blau / blue	Neutralleiter / neutral	Neutralleiter / neutral
	grün/gelb yellow/green	PE / ground	PE / ground
D+	DA schwarz / black	Netz / mains	DALI - DIM
D-	DA braun / brown	Netz geschaltet / switched supply	DALI - DIM



Max. Anzahl LED Leuchteneinheiten je Leitungsschutzschalter 1-pol.

	B10	B13	B16	C10	C13
On/Off	10	13	16	16	21
DALI	13	17	22	21	28
Tunable white	10	13	17	16	22

Die Angaben beziehen sich auf 230VAC. Die Herstellerangaben sind zu beachten.

Für den Betrieb von Leuchten werden Leitungsschutzschalter mit C Charakteristik empfohlen.

Bei mehrpoligen Leitungsschutzschalter reduziert sich die max. Anzahl um 20%.

Die aufgelisteten Angaben sollen nur als Richtwerte dienen und können im Einzelfall abweichen.

The specifications refer to 230VAC. Please consider to the manufacturer's instructions.

For the operation of luminaires, automatic circuit breakers with C characteristics are recommended.

In case of multipolar circuit breakers, the values specified by the manufacturer must be reduced by 20%.

The values given in the table are intended as reference values only and may deviate in individual cases.

Technische Änderungen vorbehalten. Montageanleitung aufbewahren.

We reserve the right to make technical modifications. Retain the operating instructions.

Sous réserve de modifications techniques. Conserver le mode d'emploi.

Nos reservamos el derecho a efectuar modificaciones técnicas. Guardar las instrucciones para el uso.

Technische wijzigingen voorbehouden. Bewaar de gebruiksaanwijzing.

Tekniska ändringar förbehålles. Spara bruksanvisningen.

SCHMITZ | WILA

SCHMITZ-WILA GmbH Niedereimerfeld 29 D-59823 Arnsberg

T +49 2932 96 77 0 F +49 2932 96 77 75 info@schmitz-wila.com

10-17838

21-04-2021