



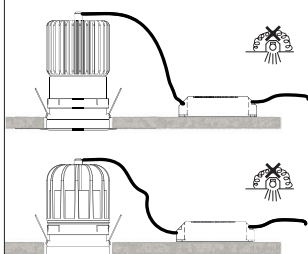
Diese Leuchte enthält eine Lichtquelle der Energieeffizienzklasse
This lamp contains a light source of energy efficiency class



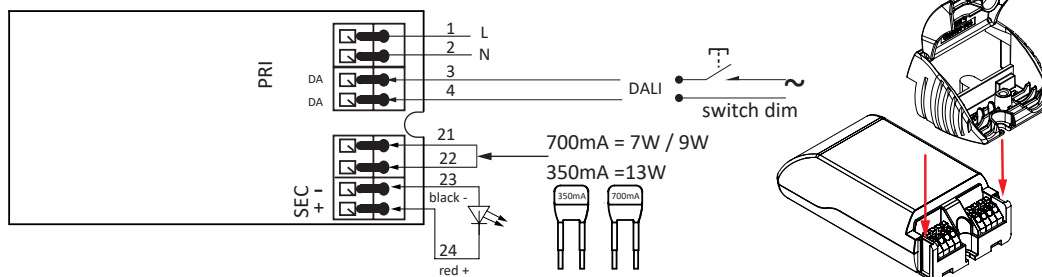
143-0xx-1xx 139-0xx-100 143-1xx-1x0



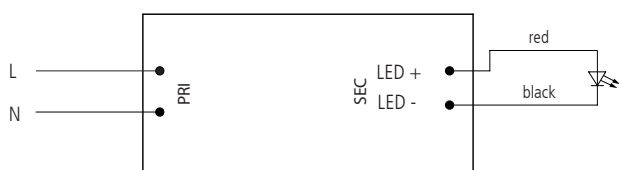
143-0xx-1xx



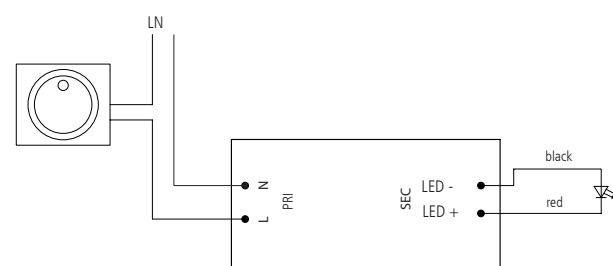
DALI - DIM



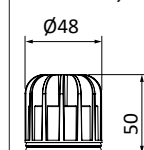
ON/OFF



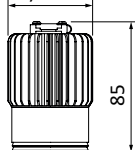
TRIAC - DIM



143-0x1-1xx, 8 W



143-0x2-1xx, 15 W



139-003-100



139-004-100



139-005-100



139-006-100



139-007-100



139-008-100



139-011-100



139-009-100



139-010-100



139-012-100



143-013-100



143-014-100



143-016-100



143-015-100

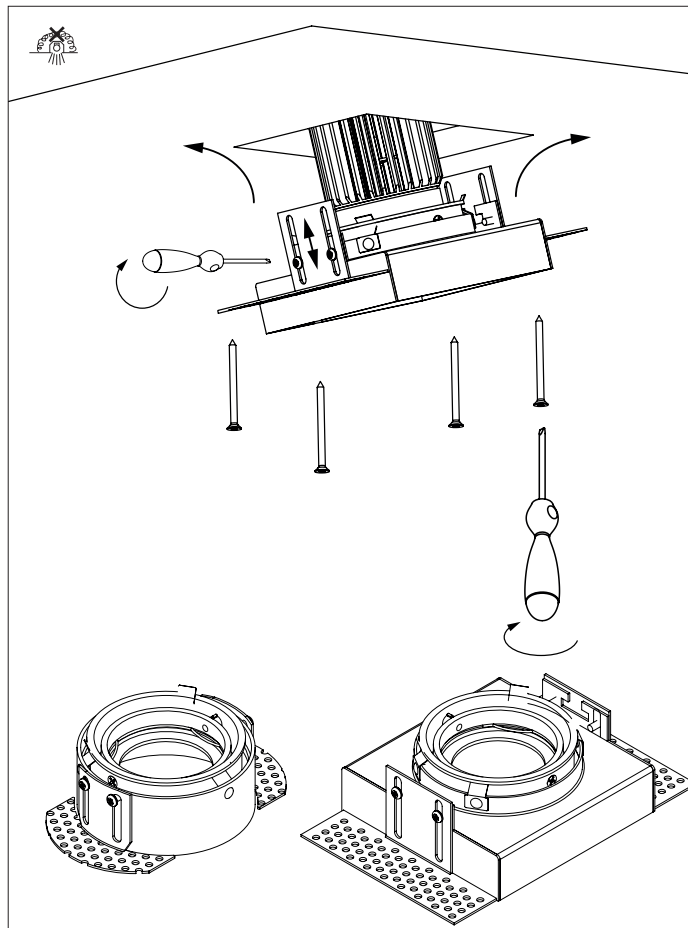
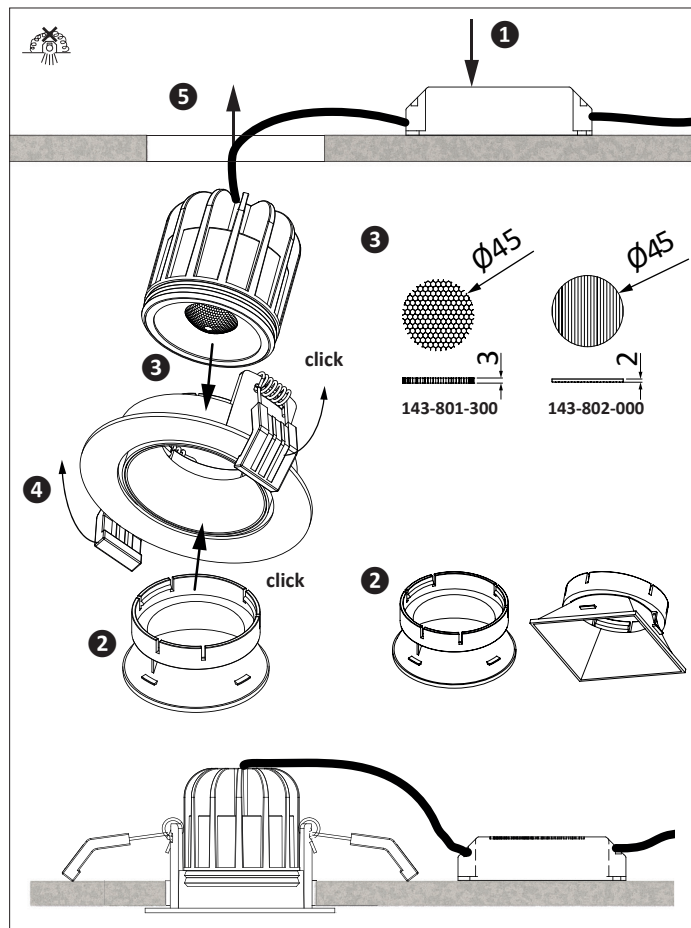


143-017-100

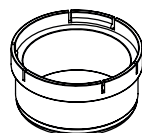


	ON/OFF Phase DIM 8 W	ON/OFF Phase DIM 15 W	DIM DALI 8 W	DIM DALI 15 W	
139-003-100	H = 70 mm	H = 90 mm	H = 120* mm	H = 120* mm	Ø 58 mm
139-004-100	H = 70 mm	H = 90 mm	H = 120* mm	H = 120* mm	Ø 58 mm
139-005-100	H = 70 mm	H = 90 mm	H = 110* mm	H = 110* mm	Ø 67 mm
139-006-100	H = 105 mm	H = 125 mm	H = 105 mm	H = 125 mm	Ø 77 mm
139-007-100	H = 95 mm	H = 115 mm	H = 95 mm	H = 115 mm	Ø 75 mm
139-008-100	H = 90 mm	H = 110 mm	H = 90 mm	H = 110 mm	Ø 82 mm
139-009-100	H = 70 mm	H = 90 mm	H = 70 mm	H = 90 mm	Ø 82 mm
139-010-100	H = 90 mm	H = 110 mm	H = 90 mm	H = 110 mm	96 x 96 mm
139-011-100	H = 90 mm	H = 110 mm	H = 120* mm	H = 120* mm	Ø 83 mm
139-012-100	H = 90 mm	H = 110 mm	H = 130* mm	H = 130* mm	94 x 94 mm
143-113-1x0	H = 80 mm	H = 110 mm	H = 80 mm	H = 110 mm	Ø 68 mm
143-114-1x0	H = 80 mm	H = 110 mm	H = 80 mm	H = 110 mm	Ø 80 mm
143-115-1x0	H = 80 mm	H = 110 mm	H = 80 mm	H = 110 mm	68 x 68 mm
143-116-1x0	H = 80 mm	H = 120 mm	H = 140 mm	H = 140 mm	Ø 65 mm
143-117-1x0	H = 80 mm	H = 110 mm	H = 100 mm	H = 110 mm	65 x 65 mm

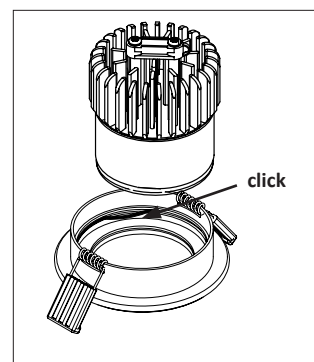
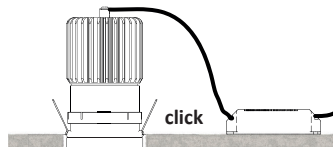
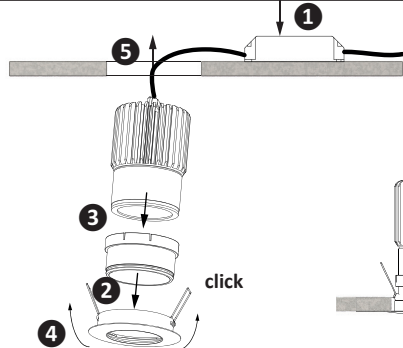
* 139-801-300 Entblendungsring | Anti-glare ring H + 0 mm



139-801-300



siehe Tabelle Seite 1 |
See chart page 1
H + 20 mm
* = H + 0 mm



Klemme Terminal	Farbe Colour	Kabel Cable	schaltbar switchable	2-fach schaltbar fold switchable	Notlicht 1h/3h Batterie schaltbar EM light with 1h/3h battery switchable	5-polige Anschlussklemme 5-pin connection cable
3	L	weiß oder grau white or grey	Netz geschaltet switched supply	direkter Lichtanteil direct light		
N	blau blue	(N)	Neutralleiter neutral	Neutralleiter neutral	Neutralleiter neutral	
⏚	grün-gelb green-yellow	(PE)	PE ground	PE ground	PE ground	
1	D+	(C)			Netz mains	
2	D-	(B)		indirekter Lichtanteil indirect light	Netz geschaltet switched supply	
Klemme Terminal	Farbe Colour	Kabel Cable	DALI	1-10 V	Notlicht 1h/3h Batterie & DALI EM light with 1h/3h battery & DALI	
L	weiß oder grau white or grey	(A)	Netz mains	Netz mains	Netz mains & charging battery	
N	blau blue	(N)	Neutralleiter neutral	Neutralleiter neutral	Neutralleiter neutral	
⏚	grün-gelb green-yellow	(PE)	PE ground	PE ground	PE ground	
D1+ DA+	D+	(C)	DALI	+ Pol 1-10 V	DALI	
D2- DA-	D-	(B)	DALI	- Pol 1-10 V	DALI	

D Beiliegende Sicherheitshinweise sind unbedingt einzuhalten. Technische Änderungen vorbehalten. Montageanleitung aufbewahren.

GB The enclosed directions for safety must be observed. We reserve the right to make technical modifications. Retain the operating instructions.

F Le respect des instructions de sécurité ci-jointes est impératif. Sous réserve de modifications techniques. Conserver le mode d'emploi.

NL De bijgevoegde veiligheidsinstructies moeten in acht genomen worden. Technische wijzigingen voorbehouden. Bewaar de gebruiksaanwijzing.

E Deben observarse las instrucciones de seguridad adjuntas. Cambios técnicos reservados. Conserve las instrucciones de montaje.

I Osservare le segnalazioni di sicurezza allegate. Modifiche tecniche riservate. Conserva le istruzioni di montaggio.

S Bifogade säkerhetsanvisningar måste beaktas noggrant. Tekniska ändringar förbehålles. Spara bruksanvisningen.

TR Ekteki Emniyet Kurallarına kesinlikle uyunuz. Teknik değişiklikler saklıdır. Montaj talimatlarını saklayın.